

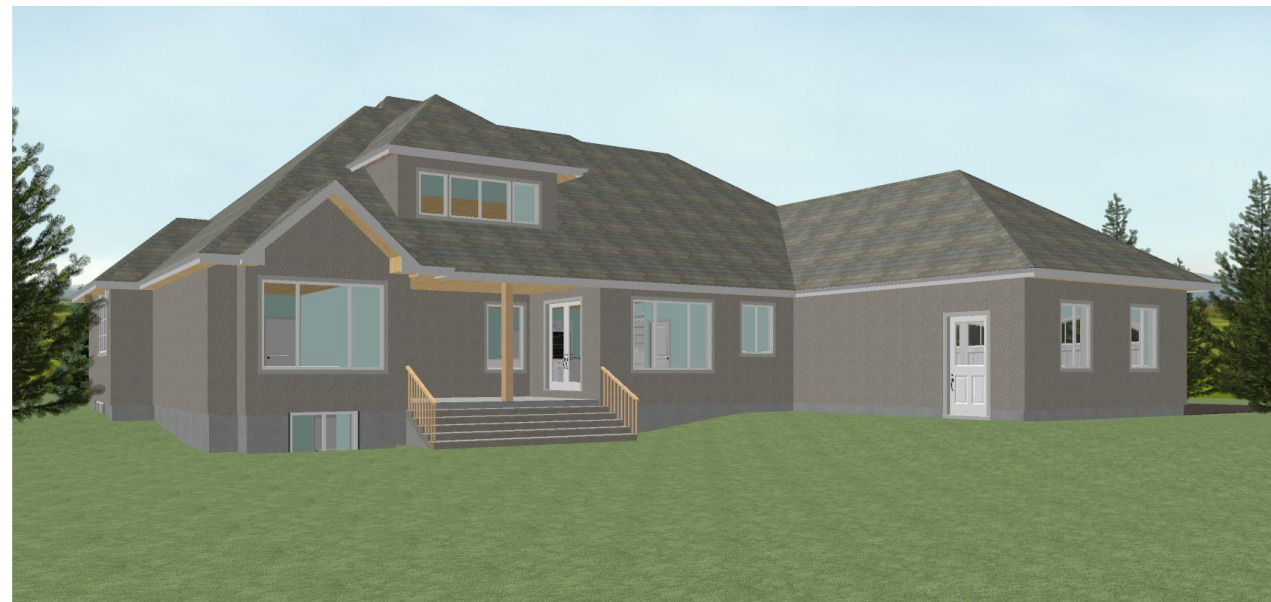
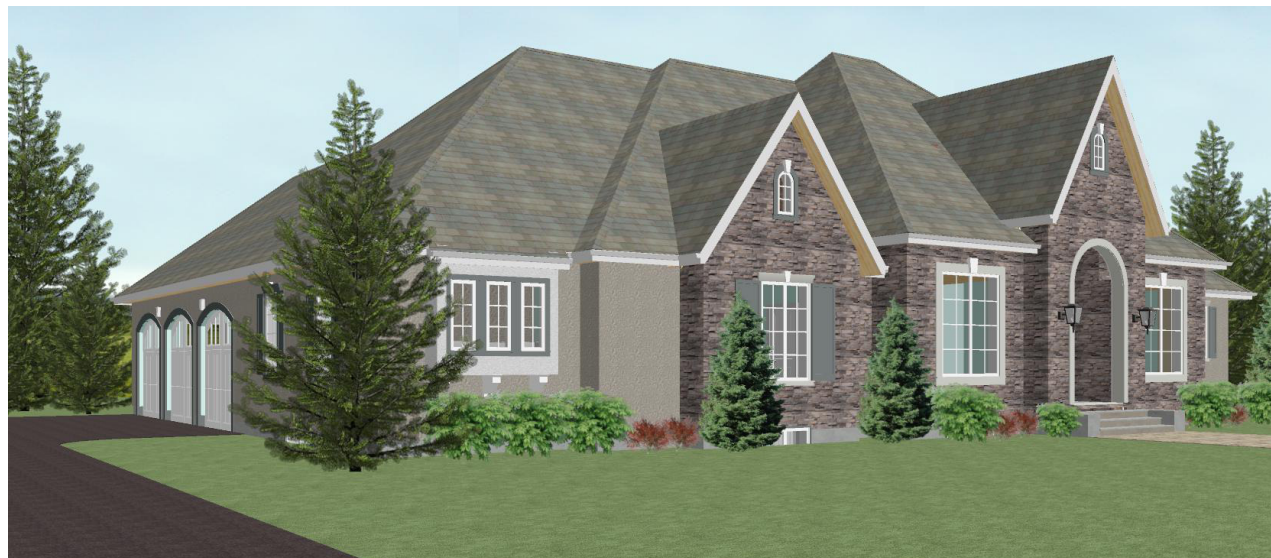


**SPENCER CREEK
ESTATES
PHASE II**

**"DARNLEY"
FRENCH COUNTRY BUNGALOW**

'DARNLEY'

DARNLEY GRIST MILL WAS BUILT IN 1813 BY J. CROOKS. LOCATED AT THE JUNCTION OF CROOKS HALLOW ROAD AND SPENCER CREEK. OPERATED AS A GRIST MILL, THEN LATER CONVERTED TO A PAPER MILL UNTIL 1934.

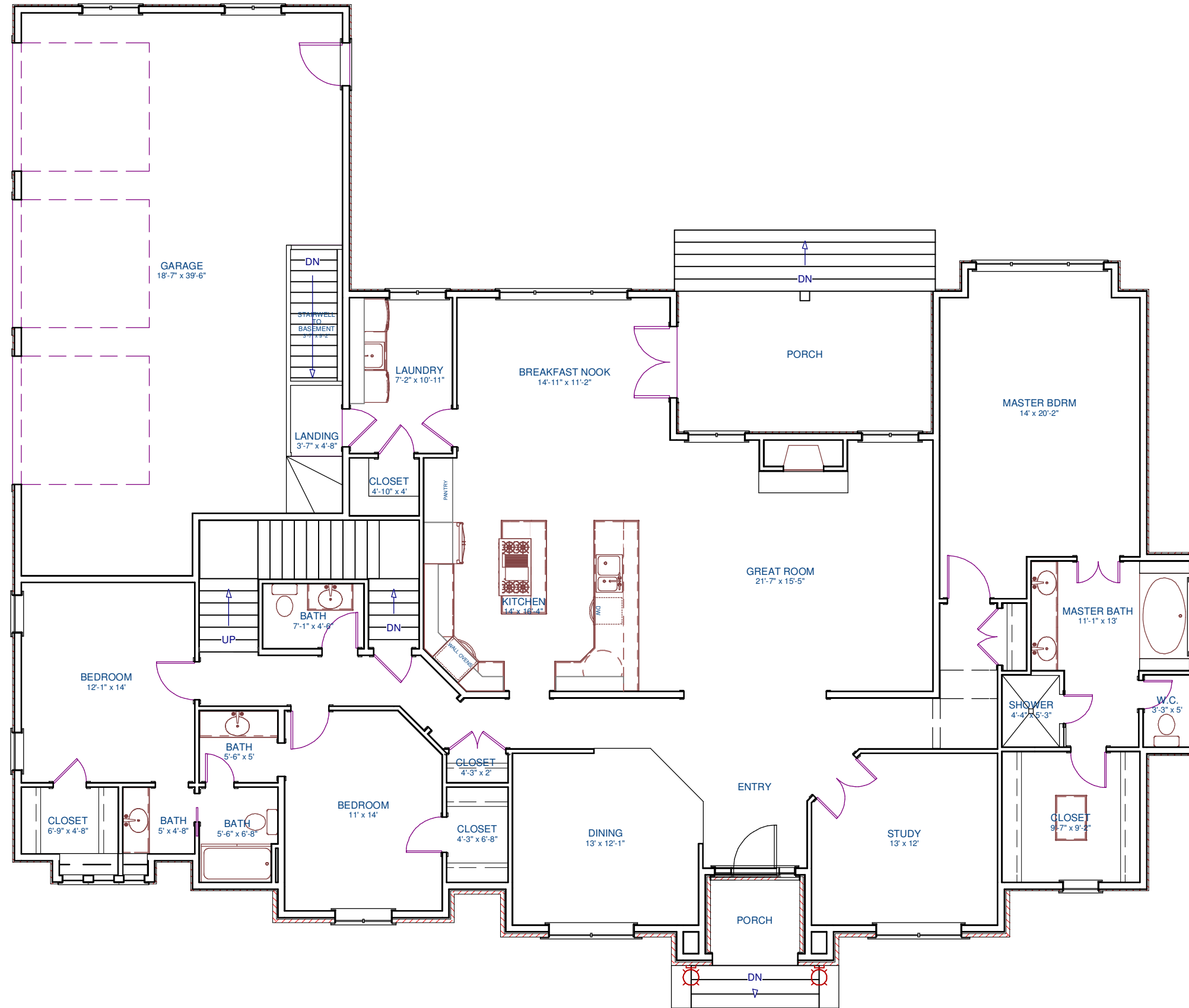


**SQUARE
FOOTAGE**

3665 SQ FT TOTAL

2811 SQ FT MAIN FLOOR

854 SQ FT LOFT



MAIN FLOOR

**SPENCER CREEK
ESTATES
PHASE II**

**"DARNLEY"
FRENCH COUNTRY BUNGALOW**

'DARNLEY'

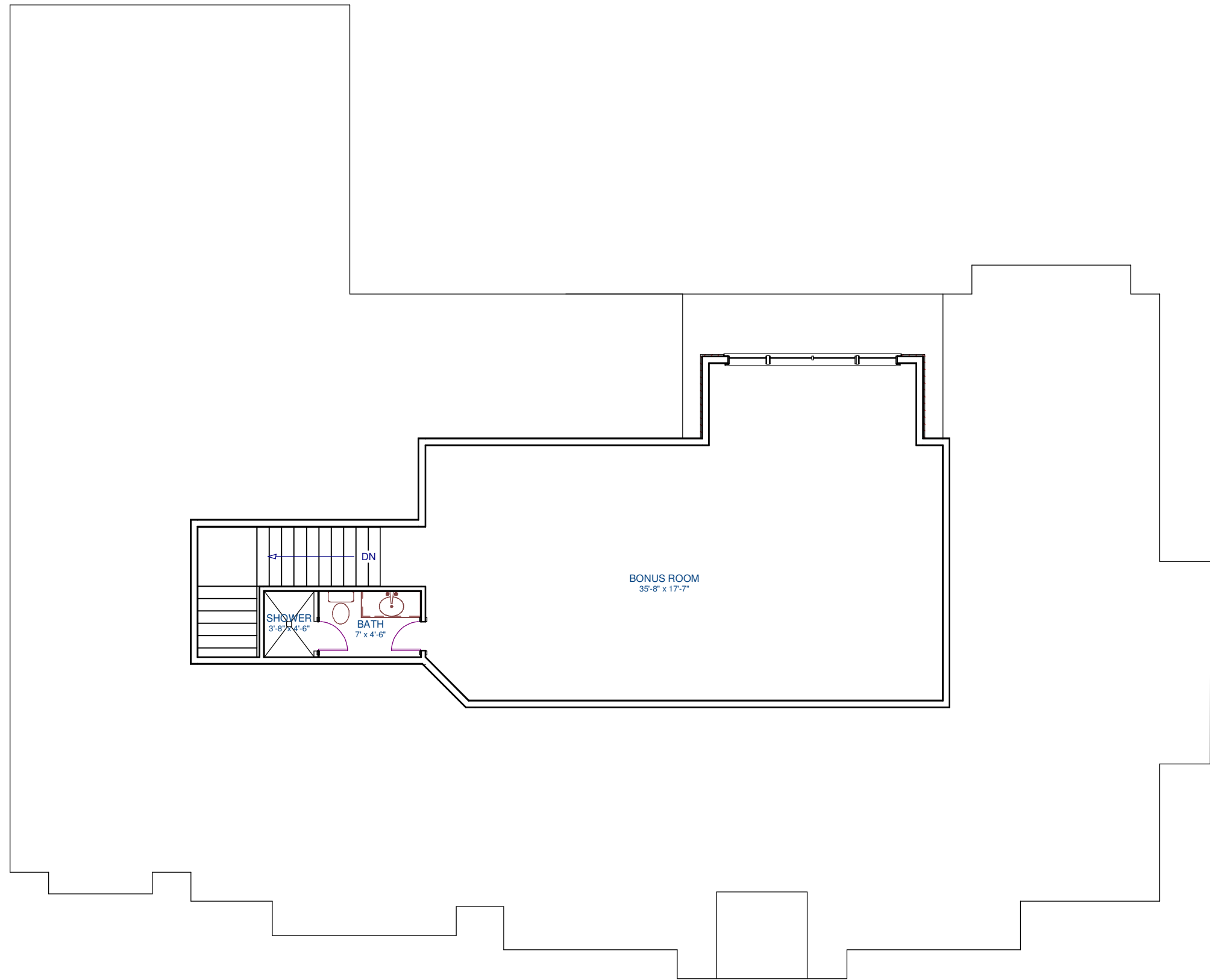
DARNLEY GRIST MILL WAS BUILT IN 1813 BY J. CROOKS. LOCATED AT THE JUNCTION OF CROOKS HALLOW ROAD AND SPENCER CREEK. OPERATED AS A GRIST MILL, THEN LATER CONVERTED TO A PAPER MILL UNTIL 1934.

**SQUARE
FOOTAGE**

3665 SQ FT TOTAL

2811 SQ FT MAIN FLOOR

854 SQ FT LOFT



SECOND FLOOR

**SPENCER CREEK
ESTATES
PHASE II**

**"DARNLEY"
FRENCH COUNTRY BUNGALOW**

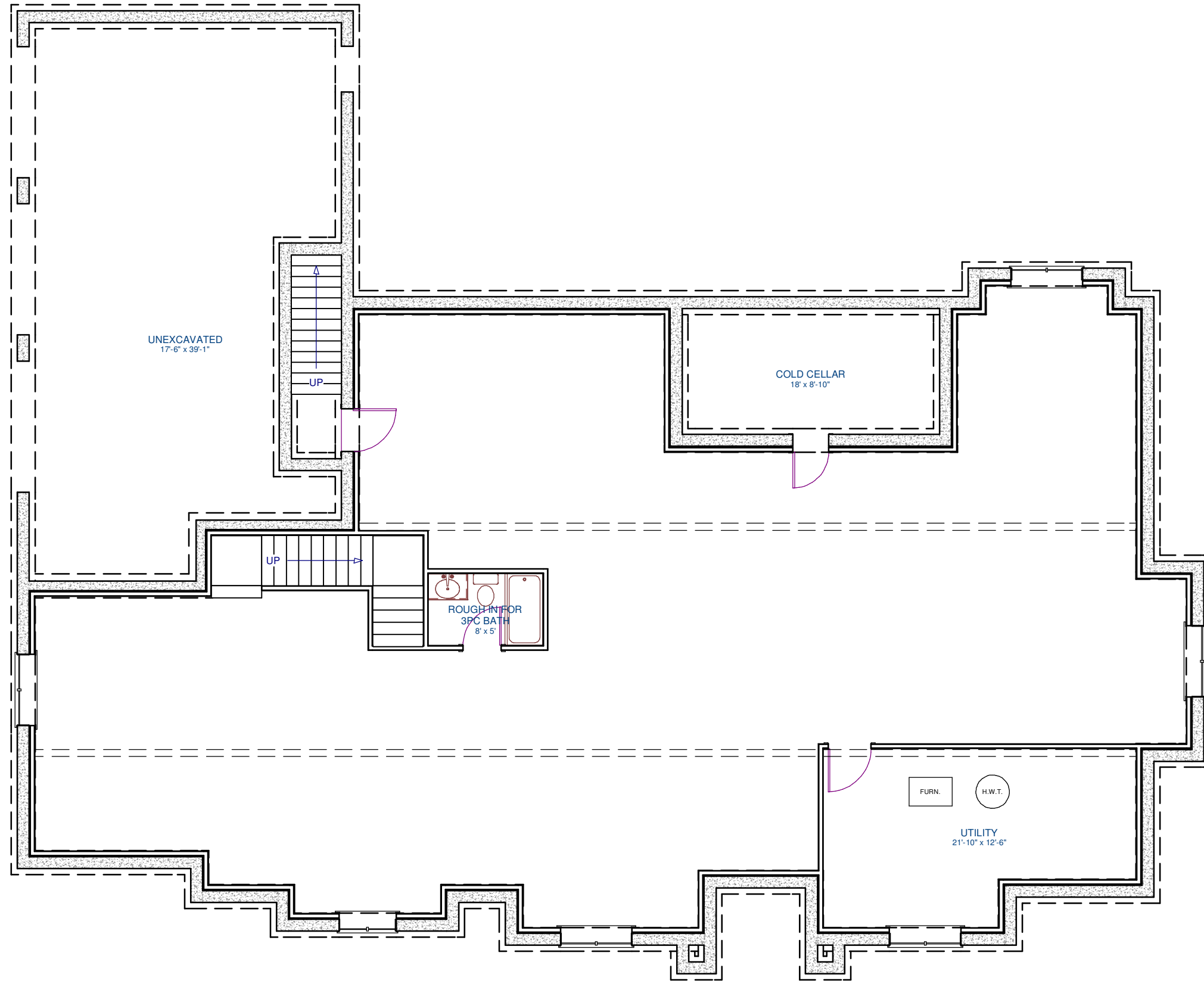
'DARNLEY'
DARNLEY GRIST MILL
WAS BUILT IN 1813 BY
J. CROOKS. LOCATED AT
THE JUNCTION OF CROOKS
HALLOW ROAD AND
SPENCER CREEK.
OPERATED AS A GRIST
MILL, THEN LATER
CONVERTED TO A PAPER
MILL UNTIL 1934.

**SQUARE
FOOTAGE**

3665 SQ FT TOTAL

2811 SQ FT MAIN FLOOR

854 SQ FT LOFT



BASEMENT

**SPENCER CREEK
ESTATES
PHASE II**

"DARNLEY"
FRENCH COUNTRY BUNGALOW

'DARNLEY'

DARNLEY GRIST MILL WAS BUILT IN 1813 BY J. CROOKS. LOCATED AT THE JUNCTION OF CROOKS HALLOW ROAD AND SPENCER CREEK. OPERATED AS A GRIST MILL, THEN LATER CONVERTED TO A PAPER MILL UNTIL 1934.

**SQUARE
FOOTAGE**

3665 SQ FT TOTAL

2811 SQ FT MAIN FLOOR

854 SQ FT LOFT