

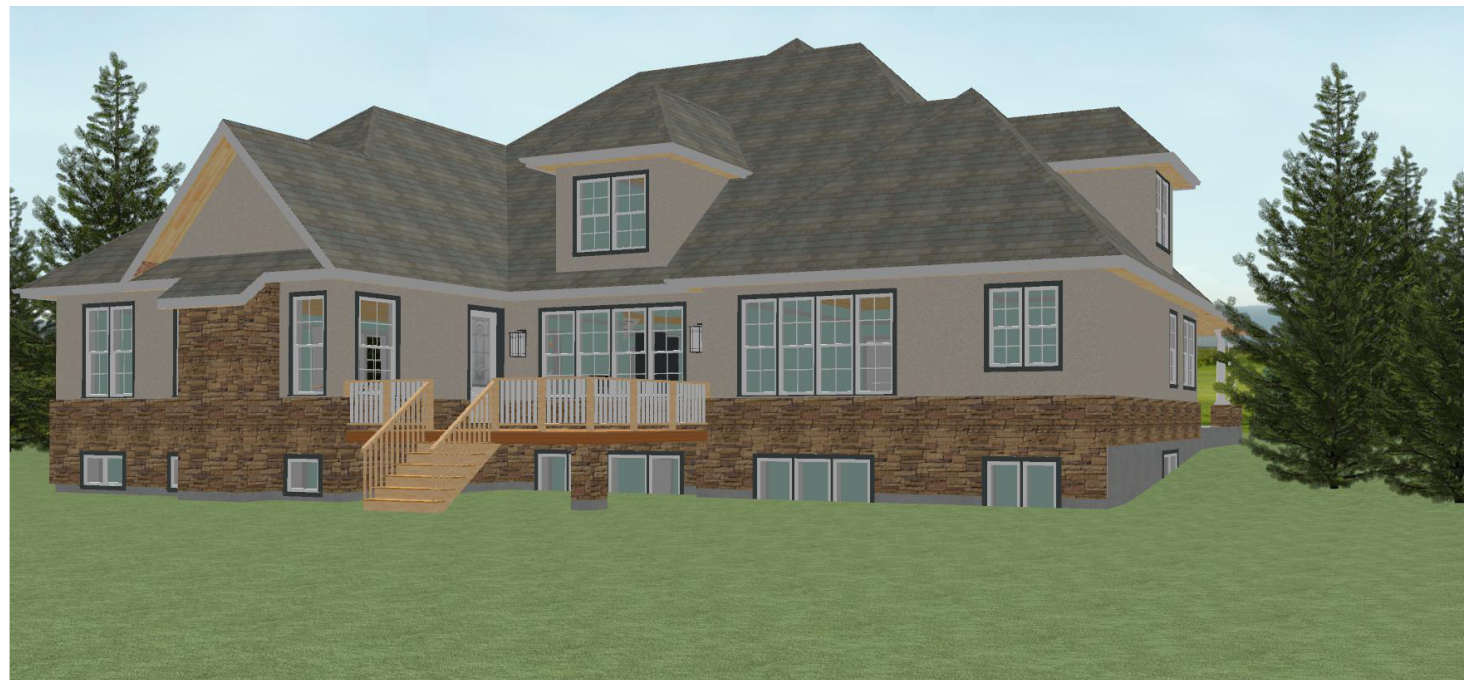
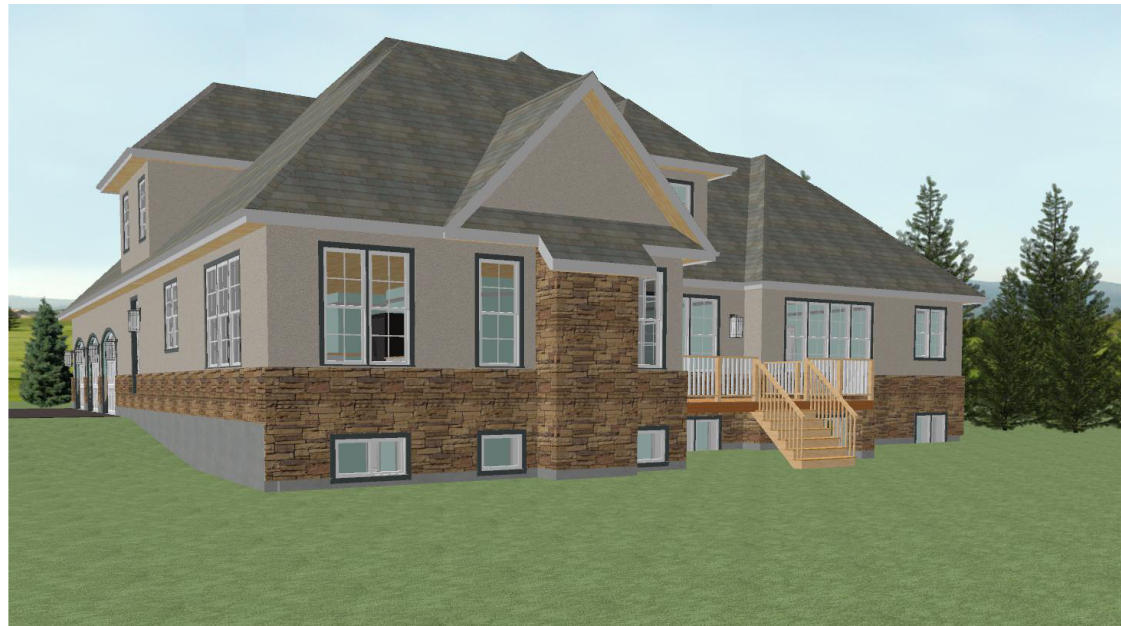


**SPENCER CREEK
ESTATES
PHASE II**

"MORDEN"
CLASSIC EUROPEAN DESIGN

'MORDEN'

MORDEN'S MILL WAS BUILT IN 1798 BY J. MORDEN. IT IS THE OLDEST SAW AND GRIST MILL IN THE AREA. THE MILL WAS IN OPERATION UNTIL 1915. IT WAS LOCATED CLOSE TO WHERE PRESENT CROOKS HOLLOW RESERVOIR IS LOCATED.

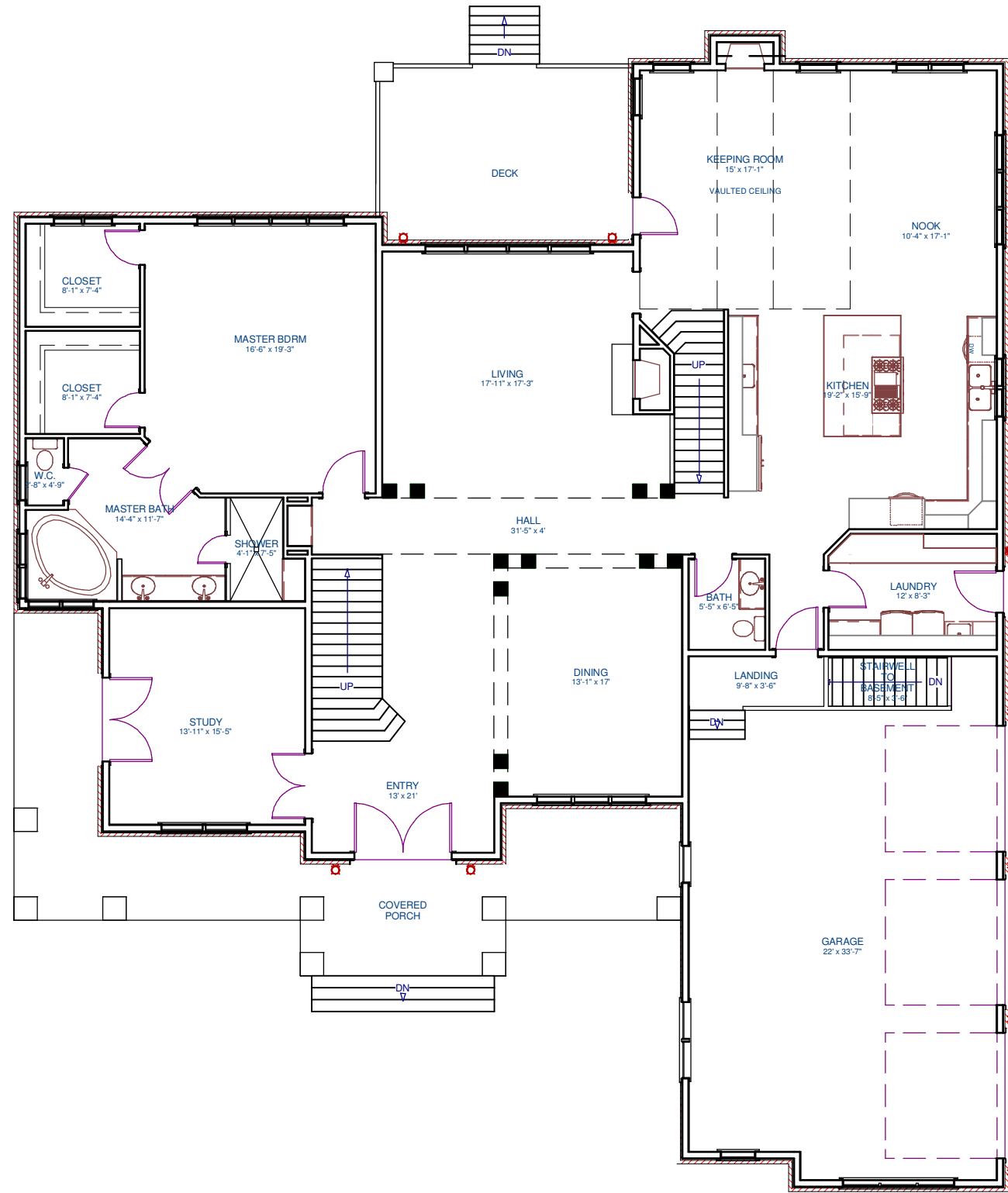


**SQUARE
FOOTAGE**

4185 SQ FT TOTAL

3023 SQ FT MAIN FLOOR

1162 SQ FT SECOND FLOOR



MAIN FLOOR

**SPENCER CREEK
ESTATES
PHASE II**

"MORDEN"
CLASSIC EUROPEAN DESIGN

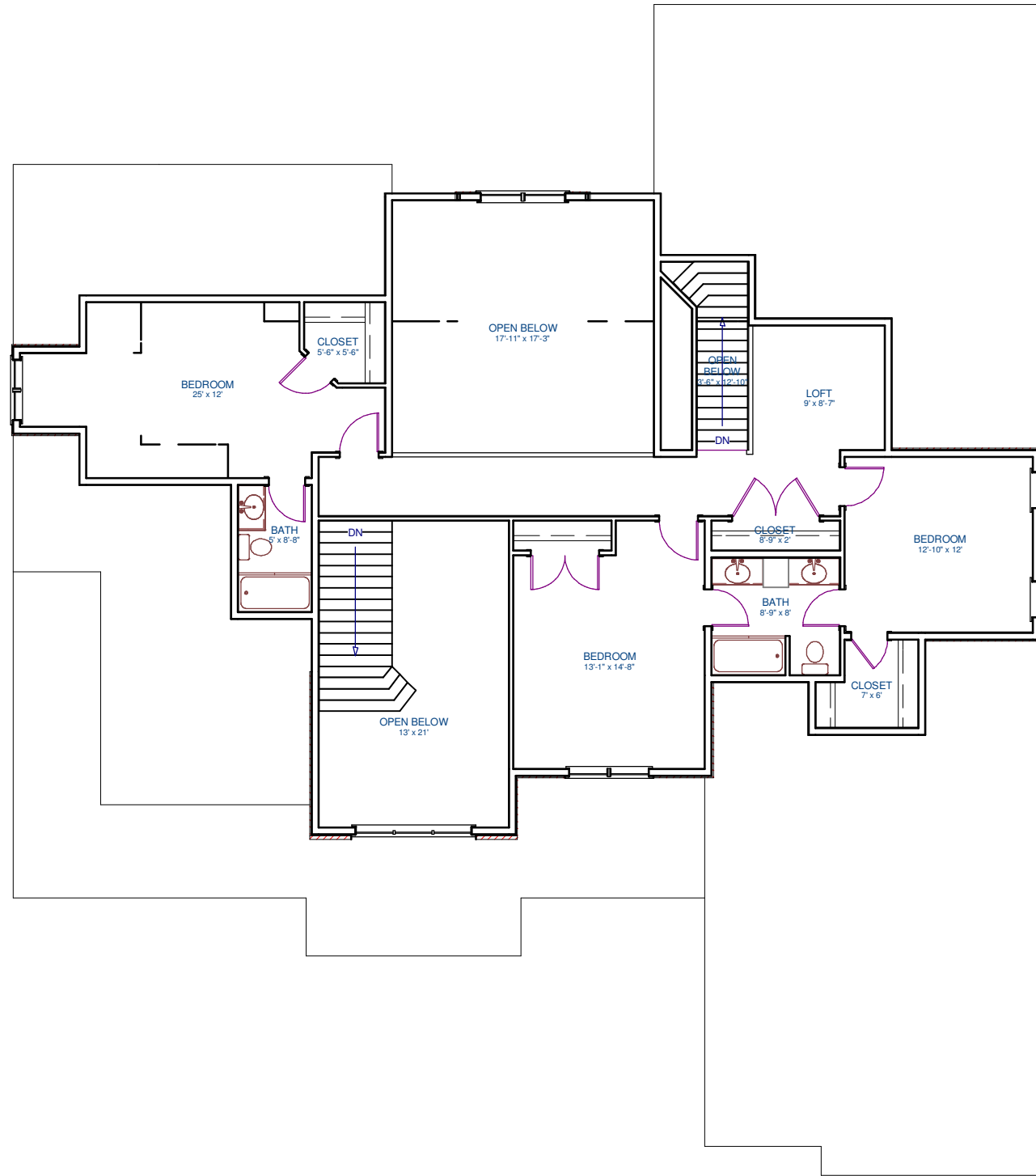
'MORDEN'
MORDEN'S MILL WAS BUILT IN 1798 BY J. MORDEN. IT IS THE OLDEST SAW AND GRIST MILL IN THE AREA. THE MILL WAS IN OPERATION UNTIL 1915. IT WAS LOCATED CLOSE TO WHERE PRESENT CROOKS HOLLOW RESERVOIR IS LOCATED.

**SQUARE
FOOTAGE**

4185 SQ FT TOTAL

3023 SQ FT MAIN FLOOR

1162 SQ FT SECOND FLOOR



SECOND FLOOR

**SPENCER CREEK
ESTATES
PHASE II**

"MORDEN"
CLASSIC EUROPEAN DESIGN

'MORDEN'

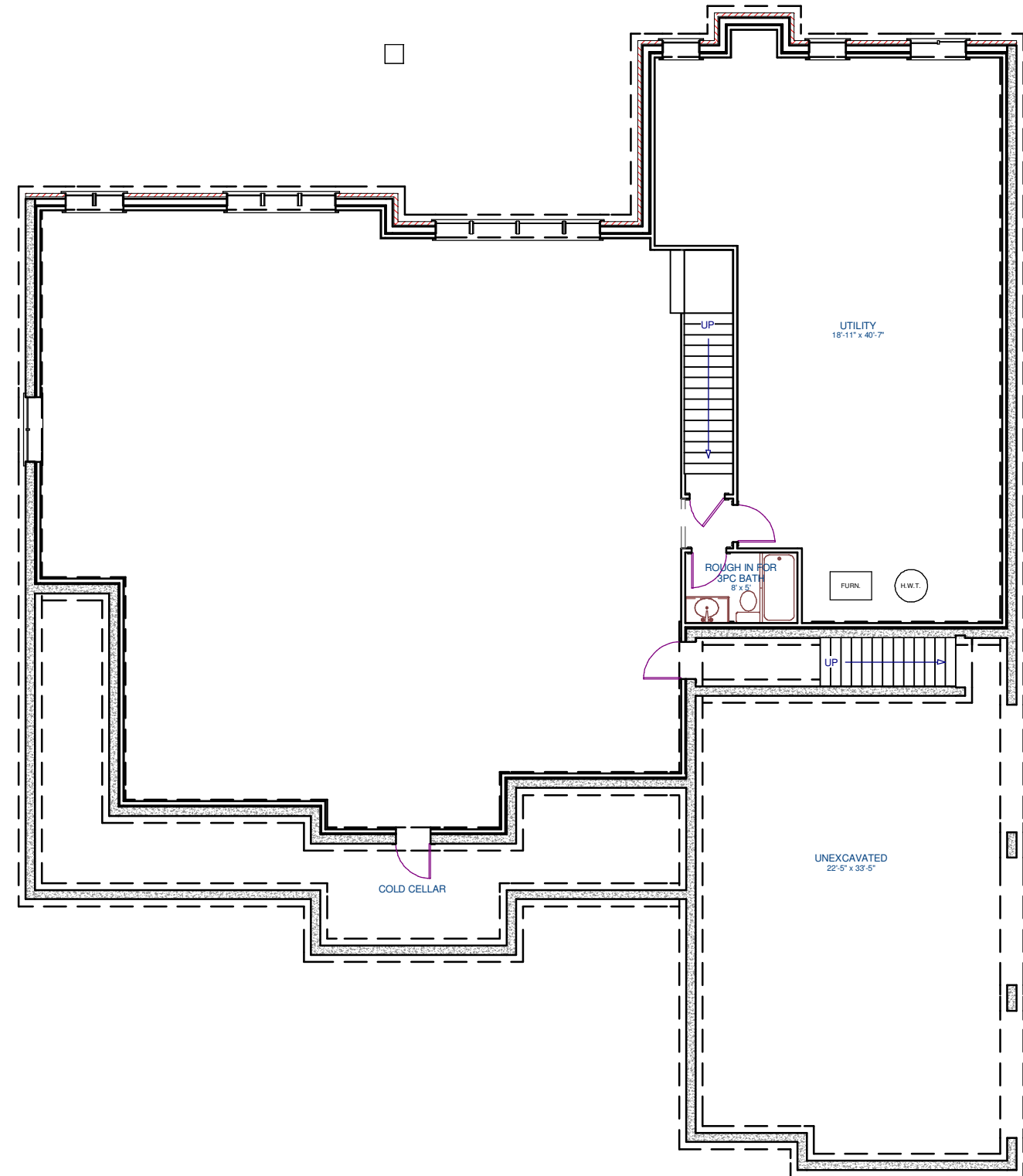
MORDEN'S MILL WAS BUILT IN 1798 BY J. MORDEN. IT IS THE OLDEST SAW AND GRIST MILL IN THE AREA. THE MILL WAS IN OPERATION UNTIL 1915. IT WAS LOCATED CLOSE TO WHERE PRESENT CROOKS HOLLOW RESERVOIR IS LOCATED.

**SQUARE
FOOTAGE**

4185 SQ FT TOTAL

3023 SQ FT MAIN FLOOR

1162 SQ FT SECOND FLOOR



BASEMENT

**SPENCER CREEK
ESTATES
PHASE II**

"MORDEN"
CLASSIC EUROPEAN DESIGN

'MORDEN'
MORDEN'S MILL WAS BUILT IN 1798 BY J. MORDEN. IT IS THE OLDEST SAW AND GRIST MILL IN THE AREA. THE MILL WAS IN OPERATION UNTIL 1915. IT WAS LOCATED CLOSE TO WHERE PRESENT CROOKS HOLLOW RESERVOIR IS LOCATED.

**SQUARE
FOOTAGE**

4185 SQ FT TOTAL

3023 SQ FT MAIN FLOOR

1162 SQ FT SECOND FLOOR